

Boat Review - Matrix Vision 450

Thinking Outside The Box

By Matthew Thomas



The Matrix Yacht's Vision 450 has unique styling and unrivalled luxury.



The TYNESIDE
Nautical Charts & Publications cc



Shop 11 John Ross House, 22 Margaret Mncadi Avenue – DURBAN
Phone 031-3377005/3370341 Fax 031 3328139 Email: Tyneside@global.co.za
See web site for details [Web site - www.tyneside.co.za](http://www.tyneside.co.za)

Admiralty Charts & Publications

World wide selection of Charts and Publications & Digital products.
Commercial and Leisure



South African Navy Hydrographic Office

Charts and Publications – Sailing Directions -Tide Tables
List of Lights & Radio Services - Small craft & yachting charts

Chart instruments – Binoculars – Marine clocks and Barometers – Sextants ,
Cruising Guides – IMO & ITU Publications – Rules Master Pro Software ,
Technical books & software for Navigating & Engineering qualifications.

CHARTS INTERNATIONAL

Unit 23 Foregate Square, Table Bay Boulevard, CAPE TOWN
Phone: 021 4197700 Fax: 021 4190580 Email: info@chartsinternational.co.za
Sail Safe

With the Cape Town International Boat Show as the premier opportunity for boat builders to show their new boats, Cape Town-based Matrix Yachts proudly presented their new Vision 450 late last year. They have established themselves internationally with their highly successful Silhouette 760, and the Vision 450 is the latest addition to their range.

Having spent many years chartering in the Caribbean, Peter and Fiona Wehrley came back to South Africa and set up their company to build the Silhouette 760. This yacht was specifically designed for the charter market and was completely different to anything out there. With its unique styling and unrivalled luxury it has become a favourite for charter guests in the Caribbean.

The Vision 450 continues this styling and is very different from any other catamaran available. While every builder tries to make their yacht unique, they all have the same general design constraints, which make them all somewhat similar -

until you look at the Vision 450. Simply put, it doesn't look like any other 45 foot catamaran available.

With its slightly rounded plumb bows and extended coachroof it looks fast and stylish. Walking closer you can see the forward windows are vertical and the foredeck is dominated by a solid platform with hatches and storage compartments. There is a hard dodger aft that gives sun protection to the large aft table, ideal for alfresco dining in a tropical anchorage.

Entering through a large double door that slides away into its own storage area, the main saloon has a full width settee and large table to retreat to if the local tropical mosquitoes decide that you are on the menu. There is a separate fridge freezer



The main saloon has a full width settee.

unit that is easily accessed as you enter, as well as a well designed galley with its own window for serving and ventilation. Whether operated as a charter boat or as your own private waterborne villa, it's clear that an enormous amount of thought has gone into the Vision 450. Its open plan living area, coupled with large windows, gives superb all round visibility. This is definitely a vessel built for a discerning owner who expects complete luxury and is not interested in roughing it at all.

Stepping down into the hulls, the first has double master cabins forward with their double beds slightly angled and with access on both sides. These are not bunks, but proper beds like you would find in a five-star hotel. Each master suite has its own bathroom forward, with a large shower and electric toilets. It's simple, it's elegant and the quality is superb. You can also order the Vision 450 in a 3-cabin



The cockpit is a great area for alfresco dining, or simply relaxing.

Southern ropes (Pty) Ltd

IT'S NOT JUST ROPE, IT'S CORDAGE ENGINEERING



TEL: +27 21 448 4978

www.southernropes.com



FISHING - INDUSTRIAL - MINING - MILITARY - YACHTING

PBO ZYLON® • VECTRAN® • DYNEEMA® • TECHNORA® • TWARON

layout which turns one hull into the owner's private domain.

Moving aft, there is another cabin, this time with a spacious double bunk that is well ventilated and airy. The aft cabins also have their own en suite toilets and once again it's all about quality.

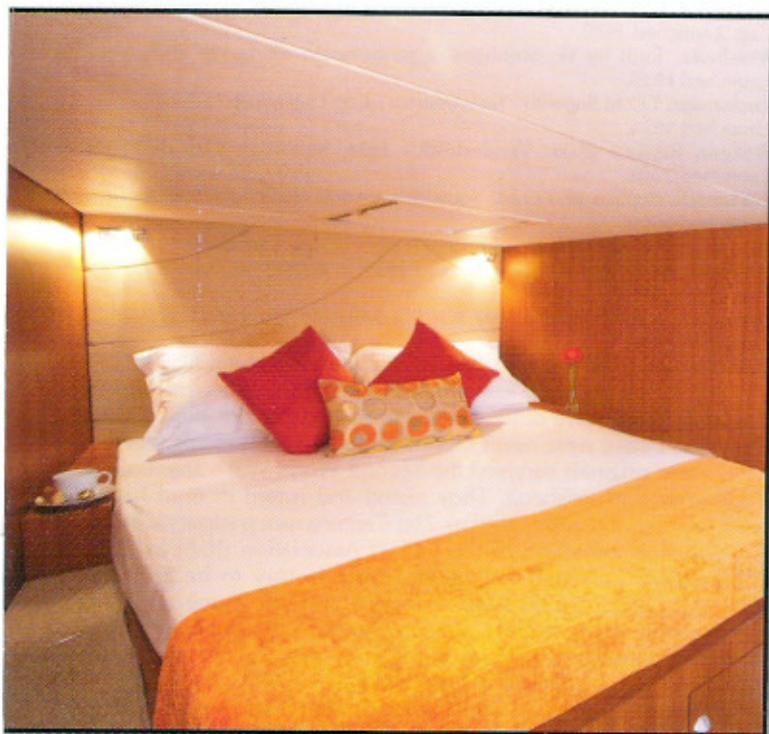
An interesting detail is that there is a service compartment between both cabins, that houses all the plumbing and electrical equipment which is easily accessed behind a flush fitting door. This means that if you need to service something, you don't have to disturb or dirty up one of the cabins, and nothing is hidden away under a bunk. Not only is this a great idea, but it also provides a buffer zone between the two cabins which ensures total privacy for the guests. Cabinetry is all European-style. There are concealed hinges, seldom found on yachts under 20m, and the veneers are all perfectly matched.

Going outside, the steering station is well situated to starboard and out of the way of the huge aft table and seating area. With cushions everywhere, there is ample space to relax. With the extended coachroof there is ample storage for the cushions and one of these areas has been converted into a pilot-style berth that would be ideal for young kids.

The coachroof is large enough to fold the mainsail on and this was one of the requirements that Peter had when he designed this boat. Too often boats are designed for passage making in bad conditions and a number of people have commented about the fact that there is a large hard deck area forward with vertical windows. Criticism has been based on the 'what happens when you take a big wave over the front' theory. As Peter points out, we live in the 21st century, with fabulous weather forecasting and accurate weather prediction and routing services. Why would you want to go out there in those kinds of conditions? Catamarans are not much fun going upwind in bad weather and it makes much more sense to simply bear away, sail away from the bad weather and have a lot more fun.

Cruising is about the places you visit and the time spent exploring other countries and being exposed to new cultures and experiences. It's about waiting for good conditions before going sailing or setting off on a passage. It's about the people you meet along the way and the quiet anchorages you share with friends. Doing it on a Vision 450 is doing it in style with the best there is to offer. ↓

Information from Matrix Yachts - info@matrix-yachts.com



No bunks here, just proper beds with access on both sides.

www.sailingmag.com

G-WIND MARINE

Aluminium yacht builders

Contact Craig 083 625 1079



G-WIND SPARS

Custom yacht mast manufacturing

Contact Craig 083 625 1079



C-KAYAK

Plastic rotomoulded sea kayaks

Contact Grant 083 625 0879 www.c-kayak.co.za



FACTORY CONTACT DETAILS

6-8 Moss Road, Westmead, KZN

Tel 031 7004525, Fax 031 700 2908

www.c-kayak.co.za