

FIND THE CATAMARANS OF YOUR DREAMS: MORE THAN 350 CLASSIFIED ADS

MULTIHULLS

World

#96 - NOVEMBER-DECEMBER - 2002 - £3.95
BIMONT
INTERNATIONAL EDITOR

CHARTER: INSTRUCTIONS FOR USE

HOW TO CHOOSE:

- Your destination
- Your boat
- Your provisioning

TOP TEN destinations NOT TO BE MISSED

(RE) DISCOVERING THE SUBLIME GRENADINES

SPORT CATAMARAN In DISTRESS single-handed in the Atlantic

TEST: BANANA 43 a real marine 4x4



General Post Office, 110 Fleet Street, London EC4A 3DF
Distributed by: The Distribution Services Ltd, 110 Fleet Street, London EC4A 3DF
Printed in the UK
ISSN 0950-0804

Multihulls - UK £3.95 - 15



→ www.multihulls-world.com

GETTING TO KNOW...

Thanks to its design, the Matrix 76 is a comfortable, but also harmonious top-of-the-range catamaran: a success!

MATRIX 76

THE XXL VERSION OF THE SOUTH AFRICAN CAT

THE YACHT CATAMARAN MARKET IS EXPANDING;
AT EACH BOAT SHOW, WE DISCOVER BIGGER AND MORE BEAUTIFUL BOATS.
WITH ITS 76-FOOTER, MATRIX IS OFFERING ITS OWN VERSION
OF THE YACHT CATAMARAN!



THE AIM: PLEASURE!

By creating the Matrix 76, the builder had a very clear aim: to offer people lucky enough to sail aboard the comfort of a real palace, and all the exceptional activities the sea can offer... The Matrix 76 thus becomes the ideal place to spend a few days' (or a few years') holiday... To achieve this aim, the company has really thought out its project, to offer the best possible vessel. For example, particular attention has been given to the crew quarters. This is not really a detail, when you know how important the crew is in the success of this kind of yacht. Along the same

Under sail, with the power of its 466m2 downwind, the Matrix is capable of 300-mile days...

lines, the deck plan has been simplified to a maximum to be high-performance, but also used by a crew of just two people...

The shape of the hulls allows good performance. Under sail, 300-mile days are completely reasonable aboard the Matrix 76 – a very good average! With the recommended 240 hp engines, at 90% of the engines' power, the laden boat will reach a speed of 13 knots. The Matrix is definitely a boat which will allow you to go far and fast!

LIFE ABOARD

Aboard the Matrix, then, everything has been done to make life plea-

The Matrix is a boat which allows you to sail far and fast... in remarkable comfort!

sant... Headroom everywhere is more than 2.1m, and the space dedicated to each person is really impressive. Places have been provided where the 'water toys' we like to have aboard a boat like this can be stored easily: second dinghy, jet ski, sport catamaran... And so the swimmers can enjoy the sea to the full, direct access is provided from the trampoline, via a very practical and easily retractable staircase. On the fly-bridge, in addition to the steering position, we find a nice relaxation area, complete with...a Jacuzzi! The place to have a really unusual bath...

The convivial cockpit is really huge, and well-protected by the flybridge. Inside, we find a really very pleasant saloon, with a bar, a lounge area and a real dining room. All this is decorated in the best possible

taste, in light colours.

Going down into the port hull, we find the galley, worthy of a restaurant, and the crew quarters. There are three other 'bedrooms' in the starboard hull, all of them spacious and equipped with a private bathroom, whilst the owner's cabin is at the front of the cabin roof, to give a generous amount of living space with an exceptional sea view. And of course, these areas are all air-conditioned...

CONCLUSION

In the much sought-after series of yachts over 70', the Matrix undeniably has its place: a well-designed, well-built catamaran which offers a beautiful living area, with a really original and very tasteful design.



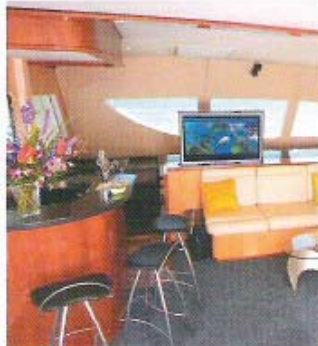
- A prestigious boat with very beautiful finishing.
- Engines which allow for good averages under power as well as under sail.



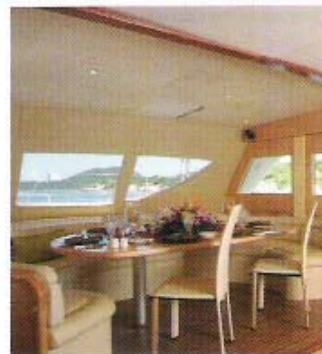
- Lack of international recognition for the builder (for the moment).



Dinghies, jet ski, towed buoys, sport catamaran, diving equipment: the Matrix can take on board enough to keep both children and adults occupied!



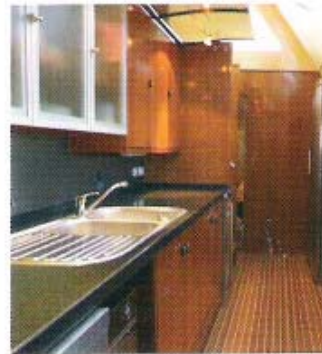
Bar, lounge, the saloon is comfortable, (very) spacious and well-designed!



The 'dining room' with sea view: a must!



The owner's cabin is situated at the front of the cabin roof: a bedroom with an unobstructed view of the sea!



The galley, in the port hull, allows meals to be cooked just like in a restaurant...



The Jacuzzi, on the flybridge...

TECHNICAL SPECIFICATION

Length:	23 m
Beam:	11,50 m
Draught:	1,5 m
Untladen displacement:	32 T
Laden displacement:	40 T
Mainsail:	194 m ²
Genoa:	77 m ²
Code zéro :	272 m ²
Mast height:	28,25 m
Engines:	2 x 240 hp
Fuel :	2000 l
Water:	3000 l
Covered living area:	165 m ²
Liveable deck area:	200 m ²
Flybridge:	23 m ²
Headroom:	2,1 m